

Biolith[®] Tile

Biolith tile has among the lowest carbon footprint on the market.

Biomason[®] Biolith precast concrete tile can be used in vertical facing assemblies, installed on a support wall with adhesive or mechanical systems, or used on a substrate in horizontal conditions. Our tiles exceed the physical properties of standard materials for compressive strength, absorption, freeze-thaw, adhesion, and dimensional tolerance. Biolith tiles are perfect for exterior or interior use in commercial, institutional, and residential building projects.

COLORS



Natural



Medium Grey



SUSTAINABILITY

Biolith tiles contribute to multiple LEEDv4.1 credits. Detailed list available upon request.

Applicable certifications/declarations:

- HPDv2.1
- Declare Red List Free

Biolith consists of approximately 85% granite from recycled sources and 15% Biocement material. For every kilogram of Biocement material used instead of Portland cement, we have the potential to eliminate 1kg CO₂.

BIOMASON

sales@biomason.com
www.biomason.com
1-80-BIOMASON ext. 2



PRODUCT DATA

	Product code	Imperial	Metric
Sizes	0802	8" x 2" (7 5/8" x 1 5/8")	194 mm x 41.3 mm
	1602	16" x 2" (15 5/8" x 1 5/8")	397 mm x 41.3 mm
	1808	17" x 7" (17 7/16" x 7 1/2")	443 mm x 191 mm
Thickness	(All)	3/4"	19 mm
Grout Spacing	(All)	1/8" - 1/2"	3 mm - 13 mm
Colors	Natural, Medium Grey		
Location of Use	Interior, Exterior		
Strength	Compressive	4k-6k psi	Flexural
			550-750 psi

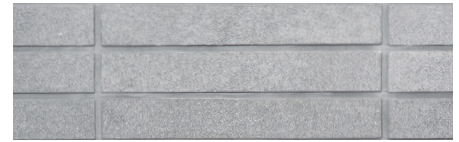
SAMPLE LAY PATTERNS



Herringbone



Running Thirds



Stacked Bond



INSTALLATION + MAINTENANCE

- Installs like traditional tile when using thin-set mortar (installation manual available upon request)
- Clean Biolith tiles in accordance with the guidelines in the Care and Maintenance Plan. Never use acid-based cleaners, such as hydrochloric or muriatic acid, on Biolith units.

RECOMMENDED USES



Flooring



Patios



Walls



Kitchens



Bathrooms

BIOMASON

Biolith® tiles are natural products. Variations in color, shade, and surface shading among tiles should be expected. Images shown may not indicate all of these variations accurately. It is recommended that you order a physical sample prior to placing an order, but note that variation across different tiles is expected and physical sample is not indicative of all possible variations in above characteristics.